

The Catalyst for Change

Subsurface Seismic Data Management

By Jane Hodson

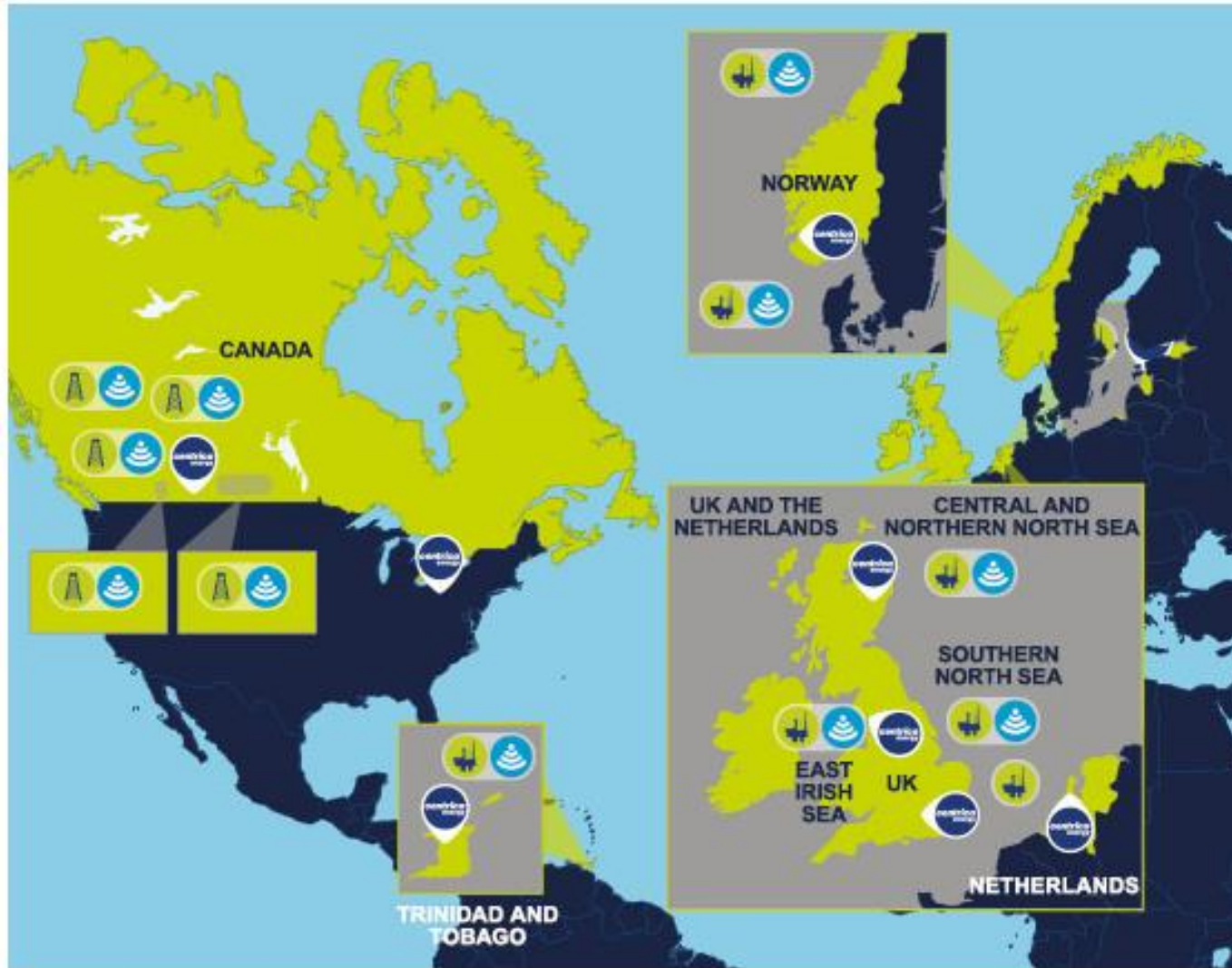
**Securing the UK's
energy needs**

**centrica
energy**

© Centrica plc, 2011

This document, and its contents, are strictly confidential and may not be used for any purpose by any person other than the intended recipient, and may not be reproduced or distributed to any other person or published, in whole or part, anywhere. Neither Centrica plc nor any of its affiliates, representatives or employees, make any representation or warranty, as to the fairness, accuracy or completeness of the contents of this document, nor will they have any liability relating to or resulting from their use.

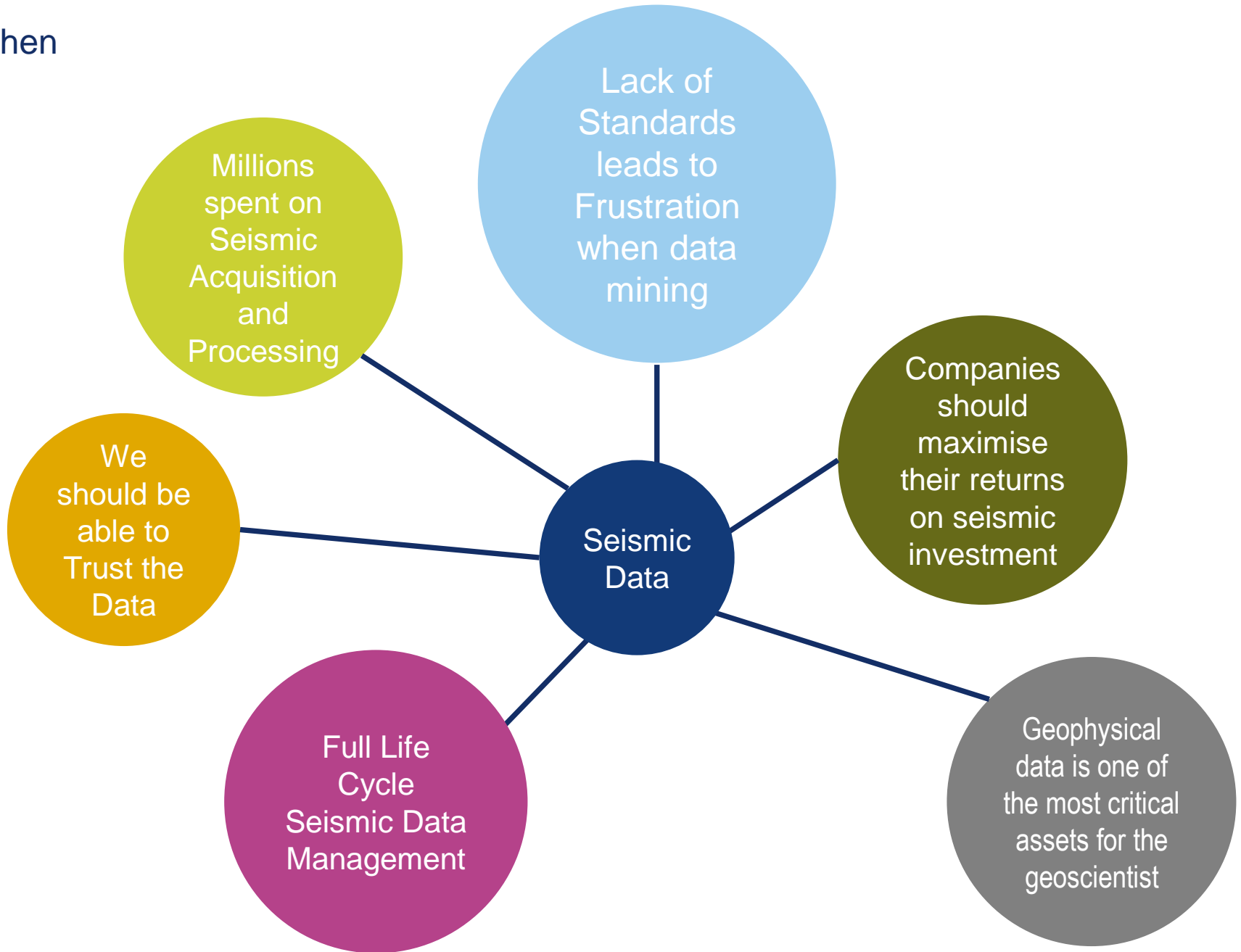
Centrica Energy E&P



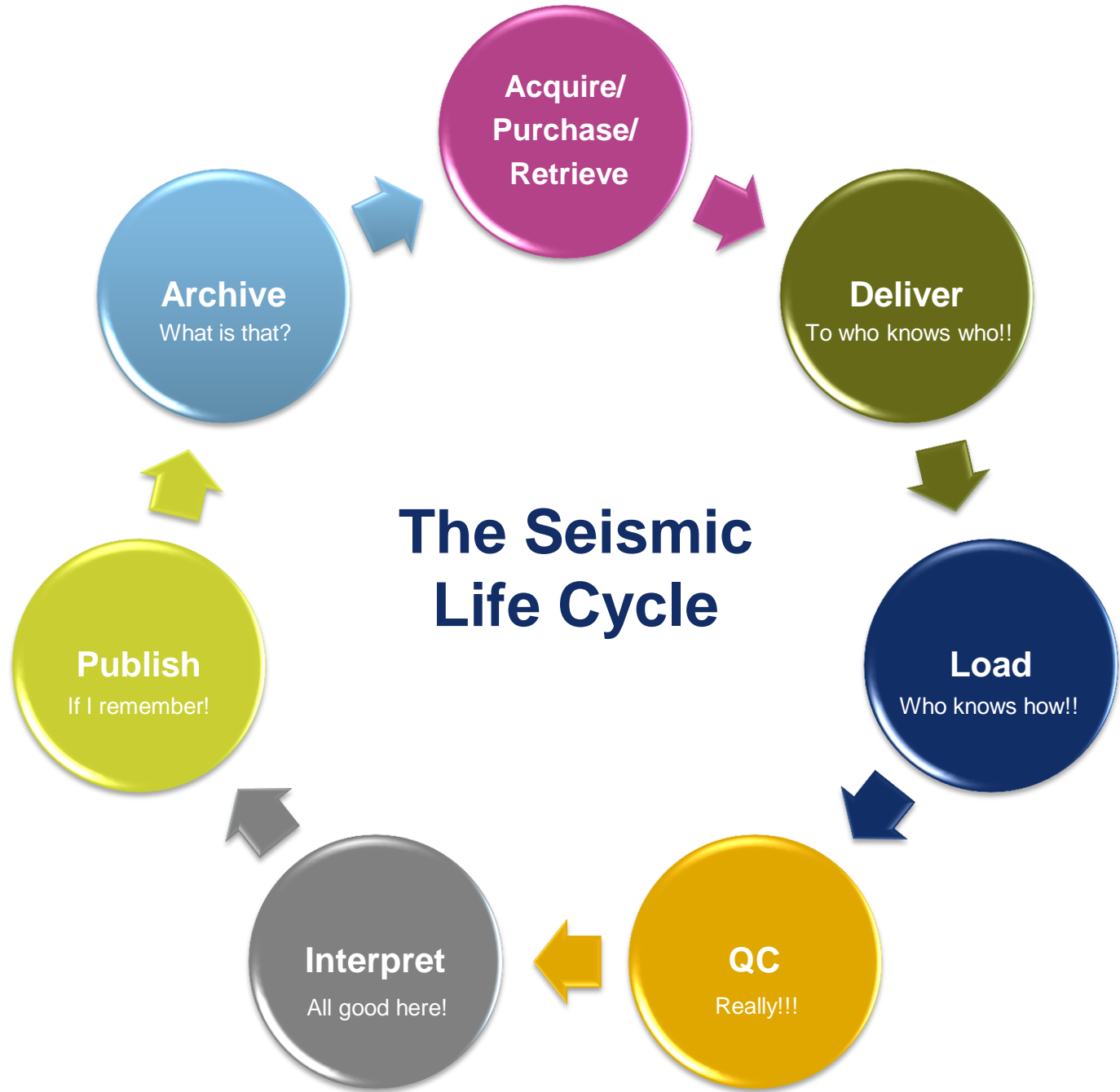
- Headquartered in Aberdeen
- Since 2010 Increased Oil & Gas Production by 50% >220,000 boe/d
- Ranked one of the fastest growing new entrants in Norway
- One of the top Gas producers in the UKCS
- Over the last 4 years acquired Venture, Suncor assets and Statfjord

 Office  Onshore Gas  Offshore Gas  Oil and Gas Exploration

Then



Then



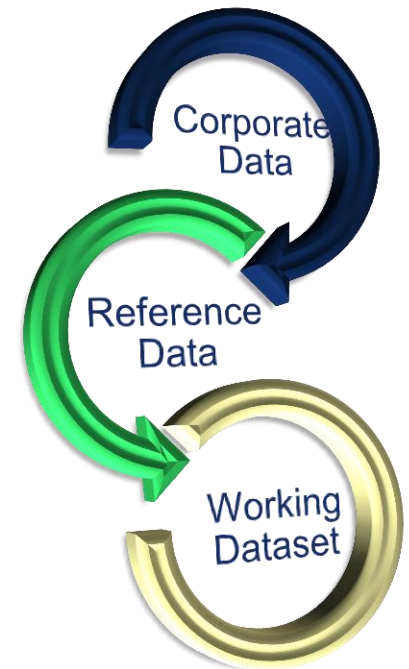
The Catalyst for Change..... 2010

- Growing sense of urgency as Centrica Energy E&P saw a substantial increase in seismic data due to new acquisitions and mergers.
- Needed a Long – Term Asset Management strategy
- Would have to handle change and operational expansion quickly and easily
- We knew that access to critical data could make or break project approval!



What happened next in

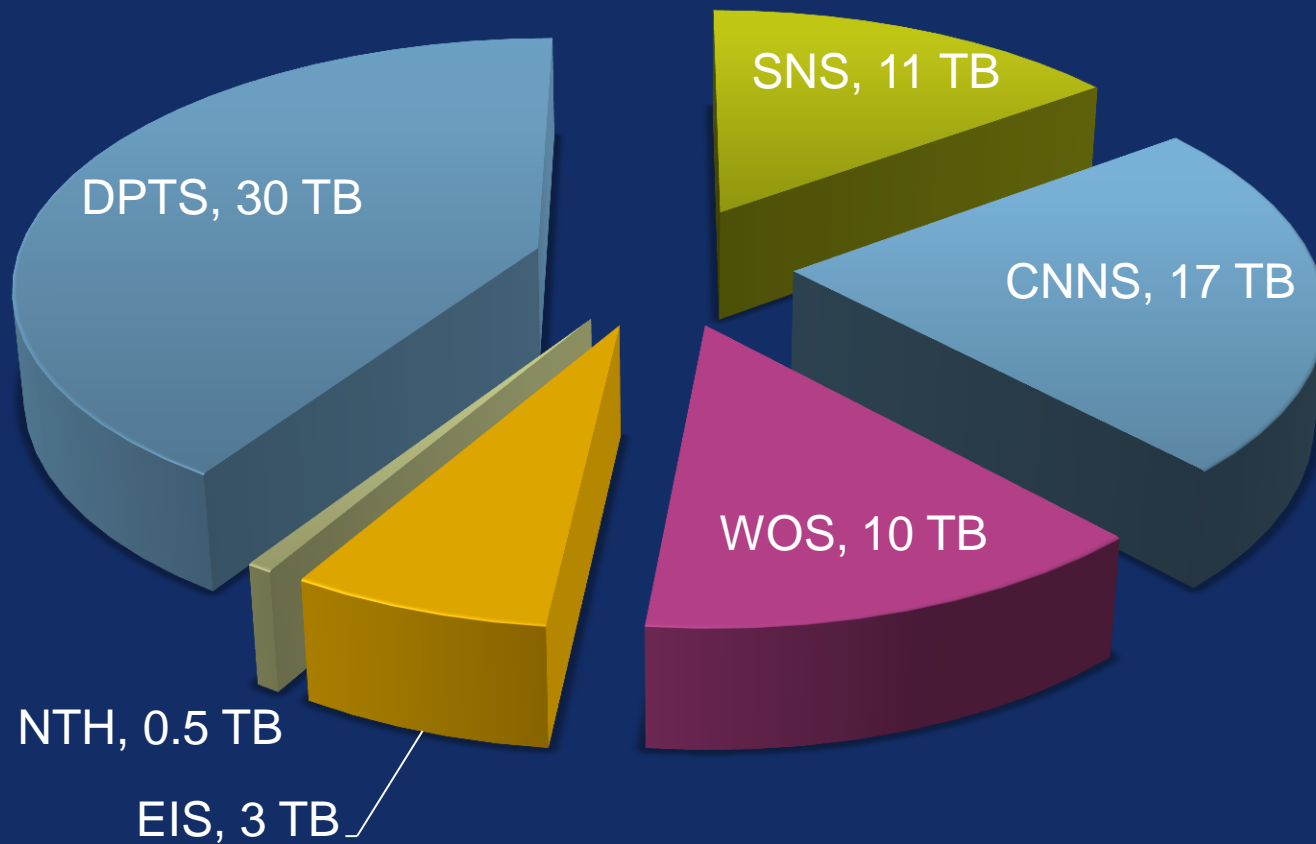
- Series of Workshops to define the Asset Management Data strategy
- Corporate Data Stores implemented
- Agreed to provide access to good quality consistent data
- Ownership of data identified and approved
- Rationalisation of data by cleanup and standards agreed
- Data management framework outlined



The story continued..... In-House

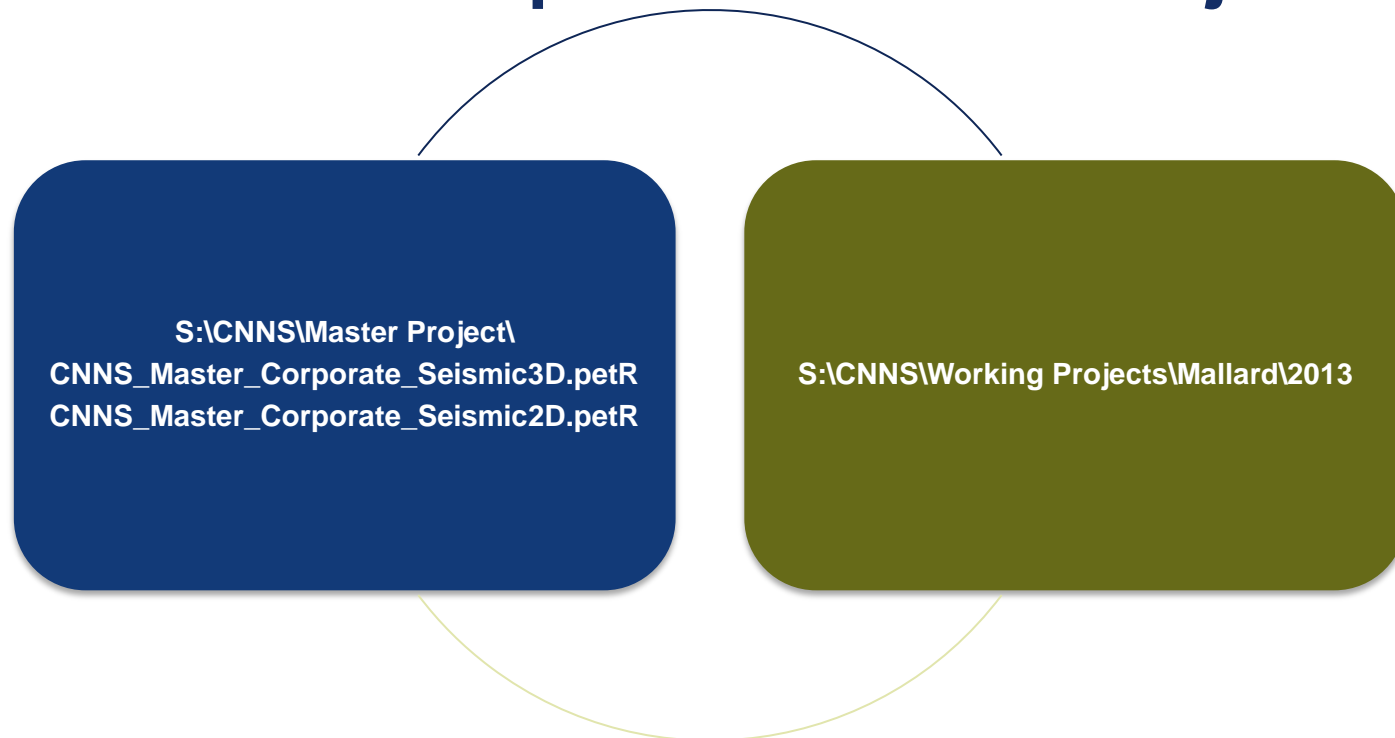
- A project to create a detailed seismic catalogue across our Assets was started in 2011.
- This catalogue included navigation, metadata, original digital media and supporting documentation (in digital format), linked together by the application of common standards and naming conventions.
- It is maintained on a specific Isilon server capable of holding at this time >150 Terabytes but can scaled to 15 Petabytes of data.
- Each workstation has a 10Gb direct connection to the server for fast and accurate access to the data.
- Created Petrel Master Projects for all Regions that have a complete set of seismic data in native format that is locked down and can be referenced for Working project use.

How much Seismic do we have in Centrica UK?



TOTAL = 73.5 TB and climbing

Petrel Master Corporate Seismic Projects



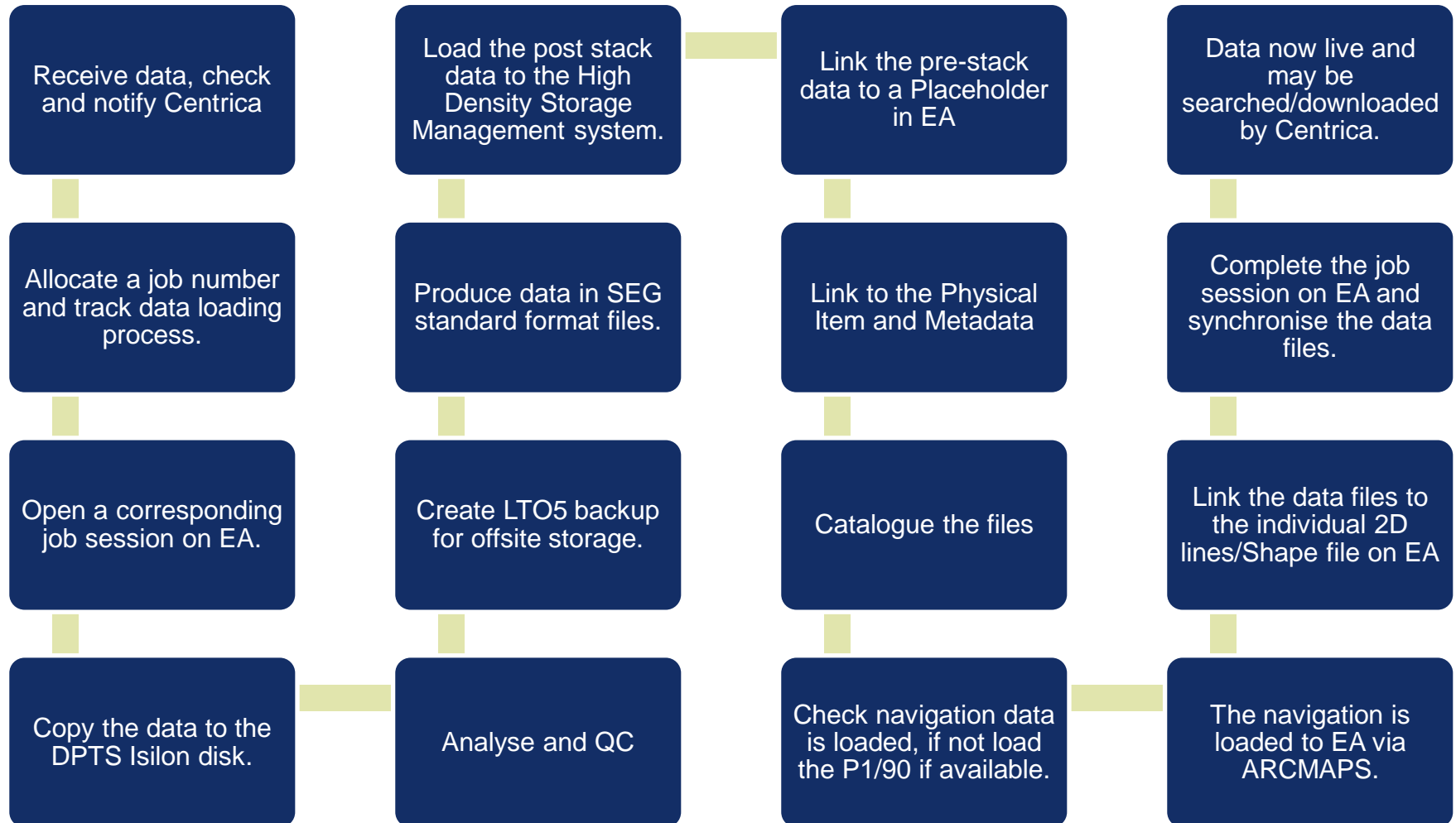
- 3D seismic is realized at 32bit and externally zgy files exist in the related folder in the seismic server.
- All Projects READ only except Data Administrators
- Users can Reference seismic from MRPS ensuring only ONE copy of each seismic volume – NO DUPLICATION
- Project tracker used to identify ROGUE seismic volumes

The story continued..... External

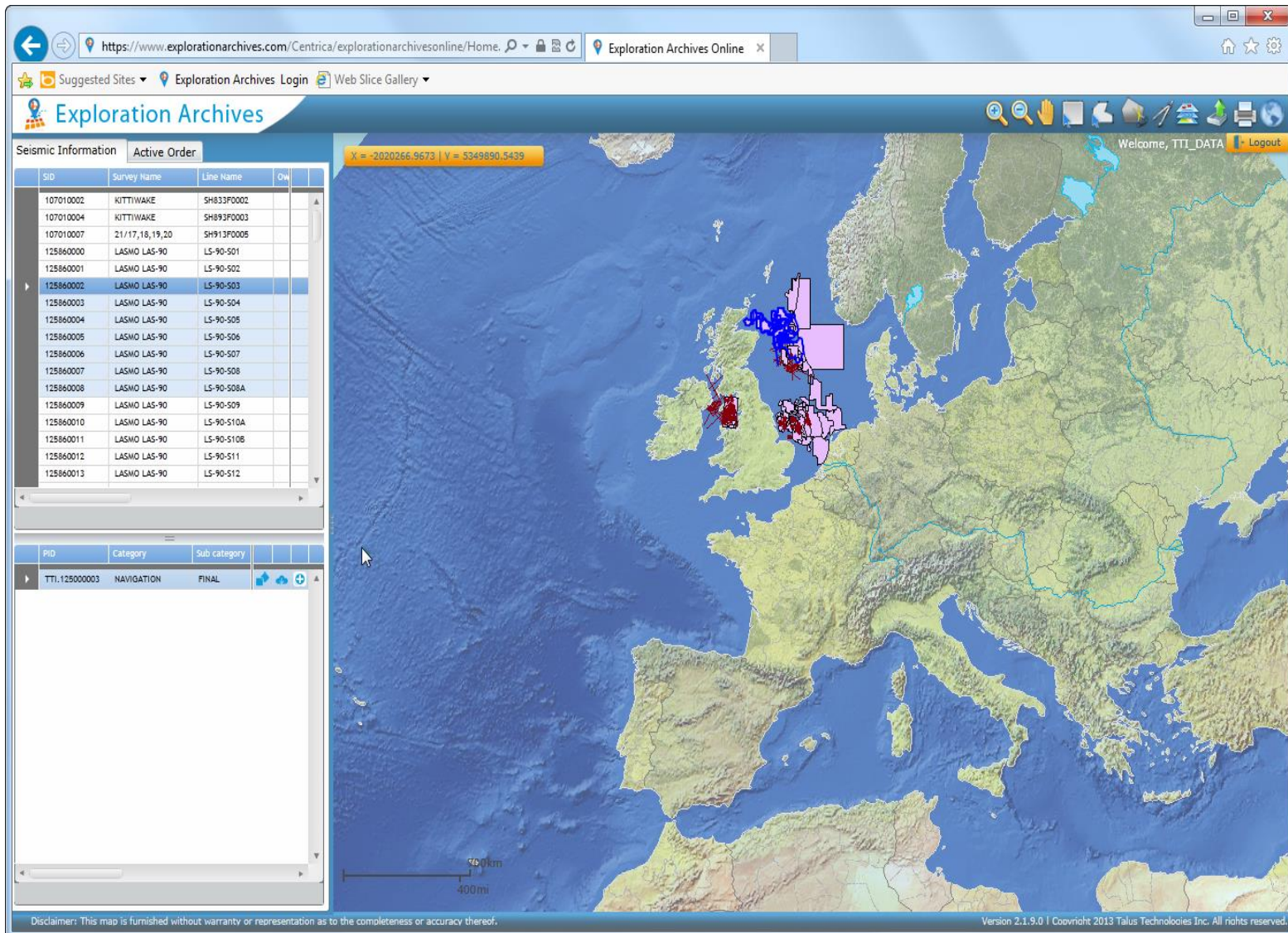
- Agreement that DPTS (Ovation Data) would become the single source solution for Seismic Archive/Retrieval/DR Solution
- We wanted a company more familiar with seismic tape transcription and storage
- GIS Front end now being implemented
- Data always on the latest technology.
- Two copies of the data holding helps meet DR requirements.
- Flexibility of access to data (online, nearline, offline, etc.)
- Online shopping is the way forward



Exploration Archives Work Flow



Exploration Archives EA2 GIS



https://www.explorationarchives.com/Centrica/explorationarchivesonline/Home

Exploration Archives Online

Suggested Sites | Exploration Archives Login | Web Slice Gallery

Exploration Archives

Welcome, TTI_DATA | Logout

X = -2020266.9673 | Y = 5349890.5439

SID	Survey Name	Line Name	DW
107010002	KITTIWAKE	SH833F0002	
107010004	KITTIWAKE	SH893F0003	
107010007	21/17,18,19,20	SH913F0005	
125860000	LASMO LAS-90	LS-90-S01	
125860001	LASMO LAS-90	LS-90-S02	
125860002	LASMO LAS-90	LS-90-S03	
125860003	LASMO LAS-90	LS-90-S04	
125860004	LASMO LAS-90	LS-90-S05	
125860005	LASMO LAS-90	LS-90-S06	
125860006	LASMO LAS-90	LS-90-S07	
125860007	LASMO LAS-90	LS-90-S08	
125860008	LASMO LAS-90	LS-90-S08A	
125860009	LASMO LAS-90	LS-90-S09	
125860010	LASMO LAS-90	LS-90-S10A	
125860011	LASMO LAS-90	LS-90-S10B	
125860012	LASMO LAS-90	LS-90-S11	
125860013	LASMO LAS-90	LS-90-S12	

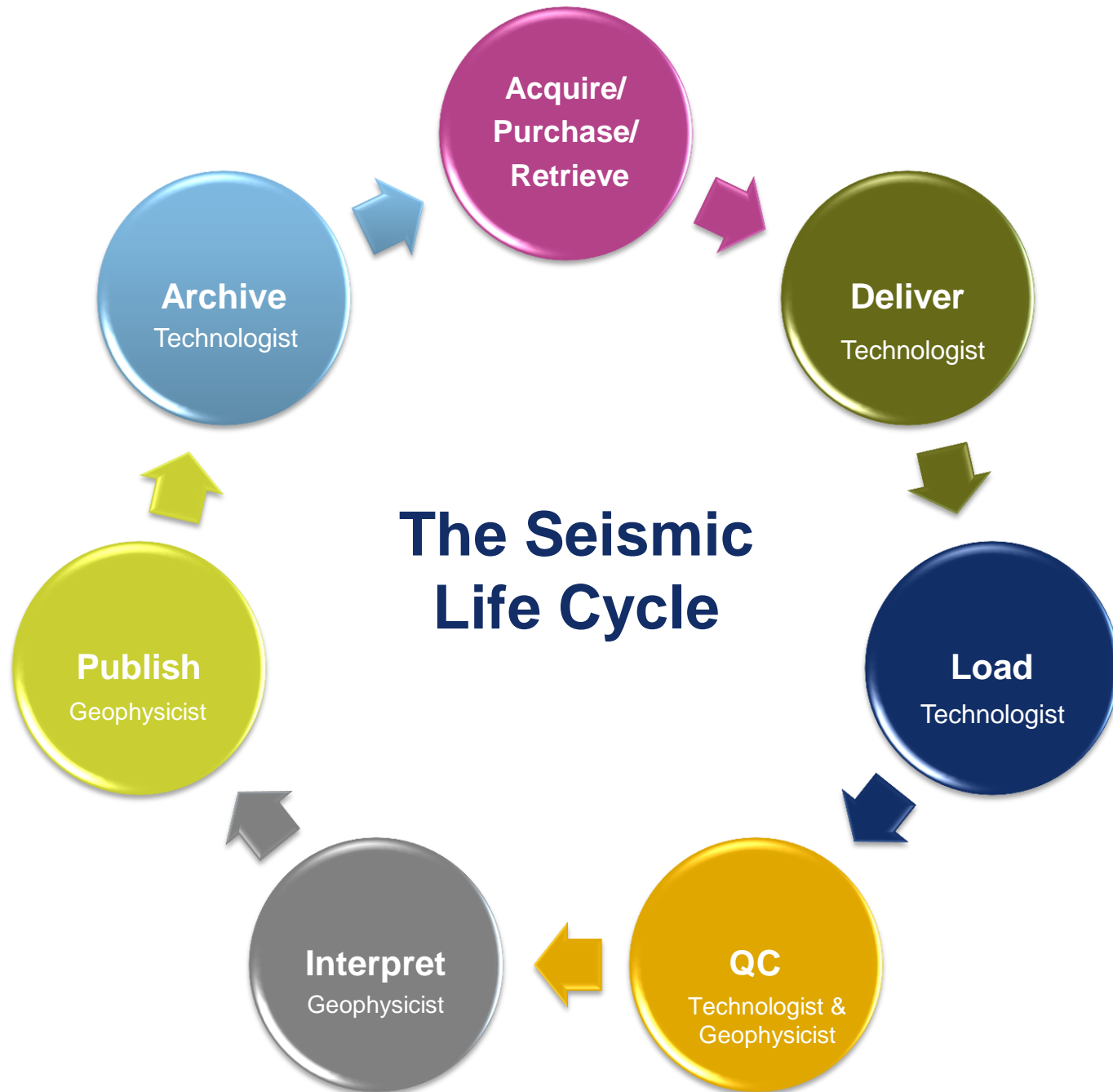
PID	Category	Sub category
TTI.125000003	NAVIGATION	FINAL

200km
400mi

Disclaimer: This map is furnished without warranty or representation as to the completeness or accuracy thereof.

Version 2.1.9.0 | Copyright: 2013 Talus Technologies Inc. All rights reserved.

Now



Now

